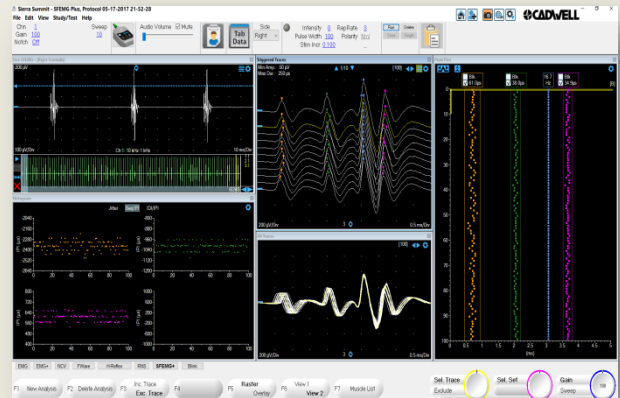
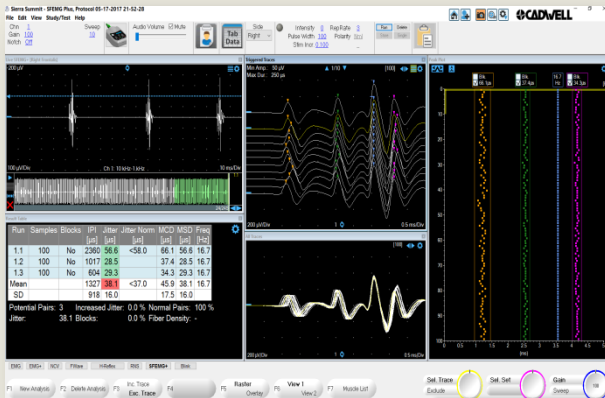


SFEMGPlus Protocol



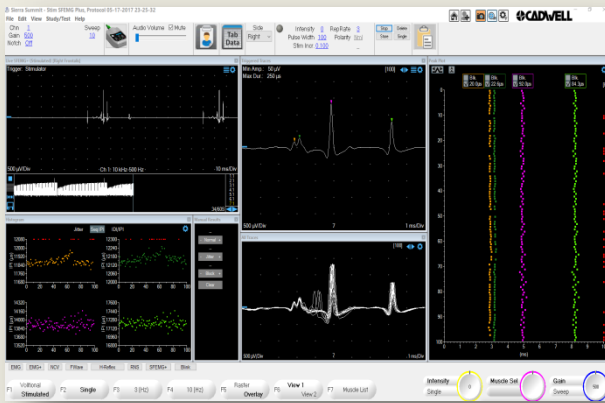
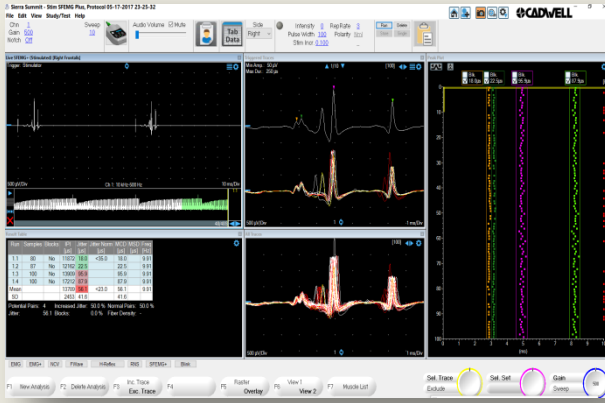
Volitional SFEMG Protocol

Run	Samples	Blocks	IPI	Jitter	Jitter Norm	MCD	MSD	Freq
			[μ s]	[μ s]	[μ s]	[μ s]	[μ s]	[Hz]
1.1	100	No	2360	56.6	<58.0	66.1	56.6	16.7
1.2	100	No	1017	28.5		37.4	28.5	16.7
1.3	100	No	604	29.3		34.3	29.3	16.7
2.1	100	No	2359	54.9		68.6	54.9	16.6
2.2	100	No	1018	27.2		37.6	27.2	16.6
2.3	100	No	604	26.8		31.2	26.8	16.6
3.1	100	No	2360	57.9		61.0	57.9	16.7
3.2	100	No	1018	28.8		38.0	28.8	16.7
3.3	100	No	602	28.7		34.9	28.7	16.7
Mean			1327	37.6	<37.0	45.4	37.6	16.6
SD			795	14.2		15.1	14.2	0.04

Potential Pairs: 9 Increased Jitter: 0.0 % Normal Pairs: 100 %
Jitter: 37.6 Blocks: 0.0 % Fiber Density: -

Results Table for all Analysed runs

- Buffer Storage (Unlimited number of buffers)
- Quick access Muscle Selection
- Two Quick Access Customisable Screen Views
- Automatic Peak Detection Analyser
- User Configurable Peak Finder Algorithm settings
- Manual Detection of Peaks
- Advanced Analysis Tools
- Quick Re-analyse function
- Colour Coded Peak Identification
- Exclude Individual Peaks
- Individual and Group Exclusion of Traces
- Auto Detection of Reference Peak
- Zoom in to Portions of buffer to Analyse
- Automatic Exclusion of Blocks
- Exporting of data via ASCII or Video recording



Stimulated SFEMG Protocol

- Buffer Storage (Unlimited number of buffers)
- Quick access Muscle Selection
- Two Quick Access Customisable Screen Views
- Automatic Peak Detection Analyser
- User Configurable Peak Finder Algorithm settings
- Manual Detection of Peaks
- Advanced Analysis Tools
- Quick Re-analyse function
- Colour Coded Peak Identification
- Exclude Individual Peaks
- Individual and Group Exclusion of Traces
- Two Customisable Quick Access Stimulus Rep Rate buttons (e.g. F3 - 3hz & F4 - 10hz)
- Zoom in to Portions of buffer to Analyse
- Automatic Exclusion of Blocks
- Exporting of data via ASCII or Video recording

Result Table

Run	Samples	Blocks	IPI [μs]	Jitter [μs]	Jitter Norm [μs]	MCD [μs]	MSD [μs]	Freq [Hz]
1.1	80	No	11872	18.0	<35.0	18.0	18.0	9.91
1.2	87	No	12162	22.5		22.5	22.5	9.91
1.3	100	No	13909	95.9		95.9	95.9	9.91
1.4	100	No	17212	87.9		87.9	87.9	9.91
2.1	80	No	11857	19.3		19.3	19.3	10.00
2.2	96	No	12149	21.6		21.6	21.6	10.00
2.3	100	No	13911	93.2		93.2	93.2	10.00
2.4	100	No	17206	85.0		85.0	85.0	10.00
Mean			13785	55.4	<23.0	55.4	55.4	9.96
SD			2273	37.7		37.7	37.7	0.06

Potential Pairs: 8
 Increased Jitter: 50.0 %
 Normal Pairs: 50.0 %
 Jitter: 55.4 Blocks: 0.0 %
 Fiber Density: -

Results Table for all Analysed runs

